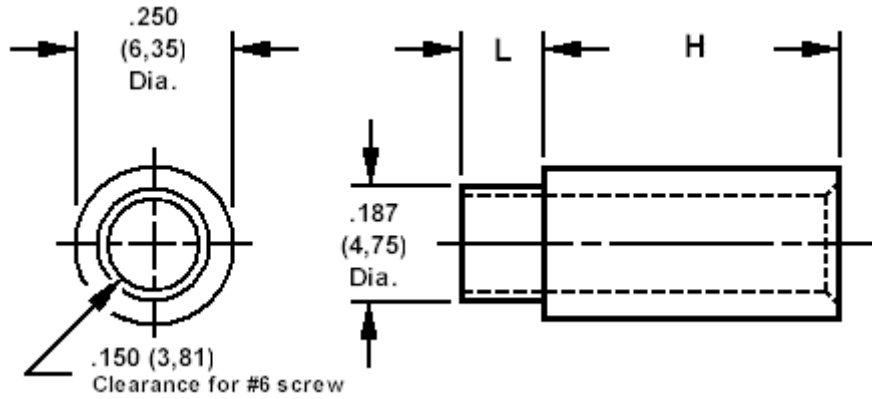


## 350-7404 Spacer/Stand-off, round, thru hole, swage mount



### How to order code

**350-7404-XX-YY-00**

Basic Part No XX = H & L dimensions, YY = Plating Finish

DIMENSIONS (XX)								
Basic Part #	(XX)						H	Swage Anvil
350-7404	-01	-09	-17	-25	-33	-41	.125 (3,18)	A
	-02	-10	-18	-26	-34	-42	.188 (4,78)	A
	-03	-11	-19	-27	-35	-43	.250 (6,35)	B
	-04	-12	-20	-28	-36	-44	.375 (9,53)	B
	-05	-13	-21	-29	-37	-45	.500 (12,70)	C
	-06	-14	-22	-30	-38	-46	.625 (15,88)	C
	-07	-15	-23	-31	-39	-47	.750 (19,05)	D
	-08	-16	-24	-32	-40	-48	1.000 (25,40)	D
<b>L</b>	.078 (1,98)	.109 (2,77)	.141 (3,58)	.172 (4,37)	.234 (5,94)	.297 (7,54)		
<b>For Board Thickness</b>	.031 (0,79)	.062 (1,59)	.094 (2,38)	.125 (3,18)	.188 (4,76)	.250 (6,35)		

MATERIALS		
Component	Material	Finish (YY)
		-19
Spacer/Stand-Off	Aluminium	Clear Chromate

SWAGE TOOLING		
Recommended Swaging Tools:-		
Punch		435-6612-01-00-00
Anvil	A	435-6410-01-00-00
	B	435-6410-02-00-00
	C	435-6410-03-00-00
	D	435-6410-04-00-00